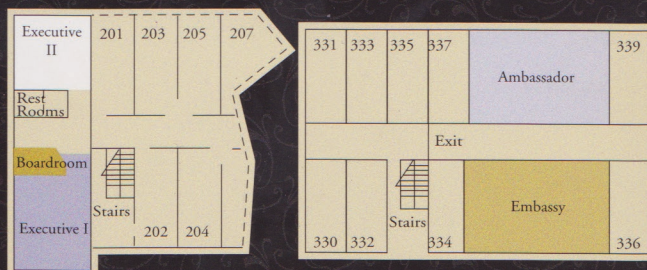
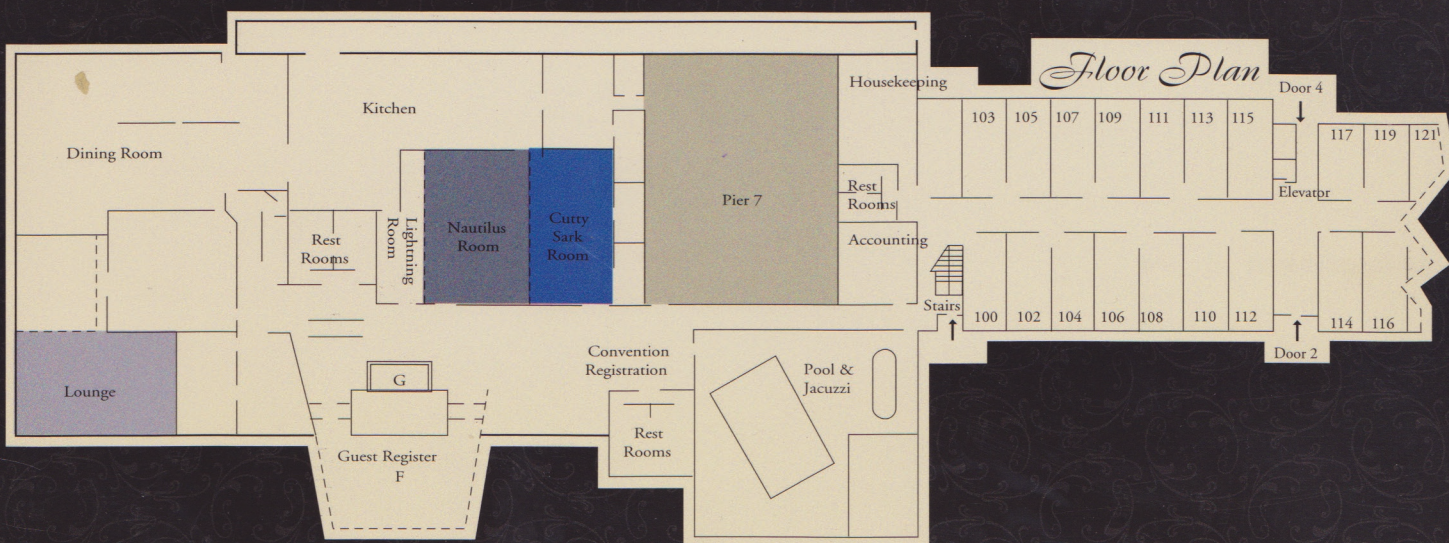


Meeting Rooms

Room Name	Room Dimensions	Square Feet	Ceiling Height	Banquet Capacity	Audience Capacity	Classroom Capacity	Round Capacity
Combined Rooms	40 x 76	3,040	10' 8"	300	450	275	200
Cutty Sark	40 x 29	1,120	10' 8"	100	100	60	64
Nautilus	40 x 29	1,120	10' 8"	100	100	60	64
Pier 7	60 x 76	4,560	16'	400	600	275	300
Santa Maria	22 x 36	792	10' 8"	60	60	40	
Executive I	40 x 23	920	8'	96	80	48	64
Executive II	26 x 23	598	8'	40	32	24	40
Board Room	26 x 18	468	8'	Seats 12 People			
Ambassador	27 x 36	972	8'	64	70	36	48
Embassy	33 x 36	1188	8'	72	70	36	56



Reservations: 701-663-7401 • 1-800-597-7327
I-94 & Exit 152 • 2611 Old Red Trail • Mandan, ND 58554